

**PS2F 5000 N25 Thermal Store**

**PS2F 5000 N25**



**PS2F 5000 N25 with insulation**

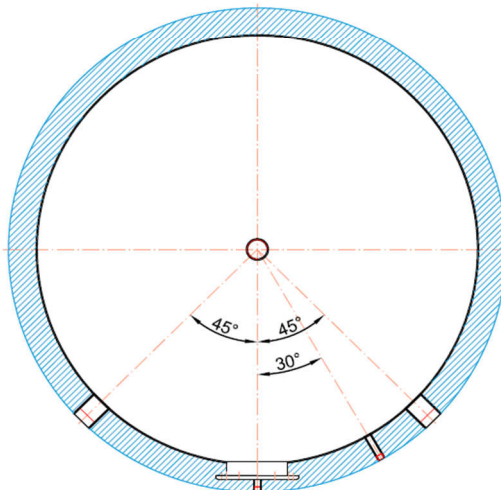
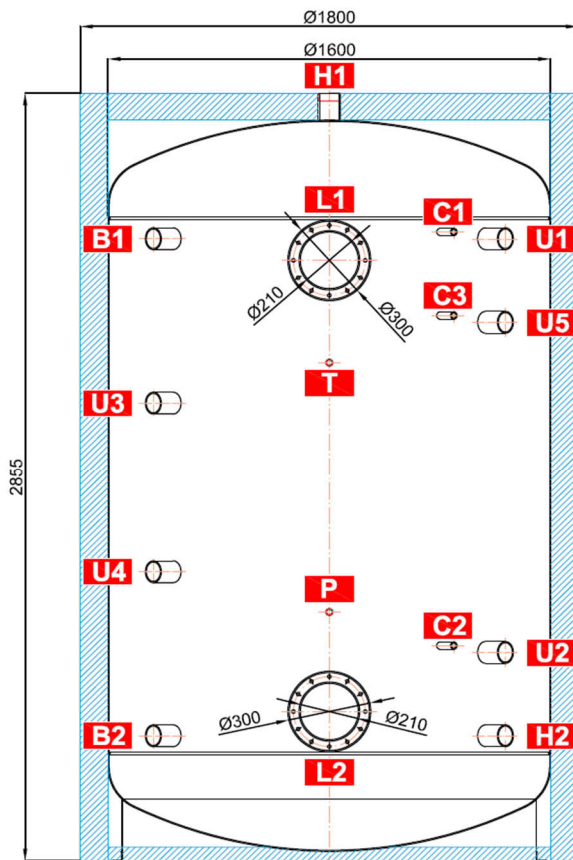


Main features	
Application	storage and subsequent distribution of thermal energy from solid-fuel boilers, heat pumps or other heat sources; the tank is fitted with 2 flanged openings that can permit installation of a DHW tube heat exchanger or connecting a solar thermal system
Description	welded steel tank
Working fluid	water, water-glycol mixture (max. 1:1), water-glycerine mixture (max. 2:1), thermal oil
Code	
Thermal Store	<b>14 466</b>
Insulation	<b>16 365</b>
Energy Efficiency Data (as per EC Regulation No. 812/2013)	
Energy efficiency class	<b>PS2F 5000 N25 with insulation</b> N/A
Standing loss	345 W
Storage volume	4994 l
Technical Data	
Total tank volume	4994 l
Max. working temp. in Thermal Store	95 °C
Max. working pressure in Thermal Store	3 bar
Materials	
Tank material	S235JR
Tank perimeter insulation	fleece
Tank perimeter insulation's outer surface	PU leather
Top and bottom tank insulation	fleece
Dimensions, Tipping height, Insulation thickness, Weight	
Tank diameter	1600 mm
Tank diameter with insulation	1800 mm
Tank overall height	2855 mm
Tipping height without insulation	2970 mm
Tank perimeter insulation thickness	100 mm
Bottom insulation thickness	50 mm
Top insulation thickness	120 mm
Empty weight without insulation	491 kg
Accessories	
El. heating element (models)	ETT-A,C, D, F, G, L, M
Heating elem. max. length / output	955 mm / 12 kW
Blind flange	code 6230
Flange for heat exchanger	code 6 231 / 6 232
Tube heat exchanger	max surface area 4,5 sqm

**PS2F 5000 N25 Thermal Store**

**Dimensions**

Tipping height without insulation 2970 mm.



**TAPPINGS**

pos.	connection	height [mm]
<b>Heat sources</b>		
<b>B1</b>	G 2,5" F	2315
<b>B2</b>	G 2,5" F	465
<b>Heating system</b>		
<b>H1</b>	G 2,5" F	2855
<b>H2</b>	G 2,5" F	465
<b>Control and safety</b>		
<b>C1</b>	G 1/2" F	2340
<b>C2</b>	G 1/2" F	925
<b>C3</b>	G 1/2" F	1855
<b>T</b>	G 1/2" F	2030
<b>P</b>	G 1/2" F	800
<b>Universal inlet/outlet</b>		
<b>U1</b>	G 2,5" F	2315
<b>U2</b>	G 2,5" F	775
<b>U3</b>	G 2,5" F	1705
<b>U4</b>	G 2,5" F	1075
<b>U5</b>	G 2,5" F	2005
<b>Flanges</b>		
<b>L1</b>	12 x M12	2235
<b>L2</b>	12 x M12	555